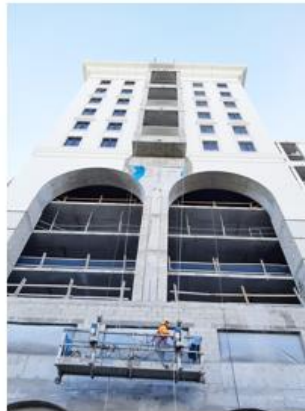


Another Sky Climber Reference!

Coral Gables, Miami - US



- DIVISION:** Sky Climber LLC
- PROJECT NAME:** Coral Gables, Miami, Florida – USA
- APPLICATION:** Several Access Solutions

In Coral Gables, Florida, Sky Climber Access Solutions is providing equipment for a high-profile mixed-use development in a key location along the transit corridors of US1 and the Metrorail.

Gables Station is comprised of three towers up to 160 feet tall containing residences, public space, and commercial space in a prime location between Coral Gables and Downtown Miami. The Mediterranean-inspired design includes public and retail space and will integrate with a 10-mile-long linear urban trail dubbed The Underline. Gables Station is designed to allow residents and visitors easily access the Metro or the trolley, walk to the wellness and lifestyle center, or visit the markets and restaurants, all on foot.

Sky Climber Access Solutions' Miami team provided a variety of equipment for this project, including suspended access platforms, penthouse clamps, parapet clamps and scaffold rigging. A total of 38 separate swing stage platforms were utilized on the project by a variety of trades crews, including stucco, paint, window, remediation, and stonework teams. The biggest challenge on the project stemmed from the sheer volume of suspended platforms and the pace at which rigging needed to be moved and repositioned. Construction is scheduled to wrap up in late 2020.